



In the SPOTLight

Cancer Science Institute
of Singapore

www.csi.nus.edu.sg

Issue 21 | October 2015

Breast and Liver Cancer Awareness Month - October

The month of October is Breast and Liver Cancer Awareness Month! This month is dedicated to raising awareness for Breast and Liver Cancers and aims to raise funds for research into its cause, prevention, diagnosis, treatment and cure.

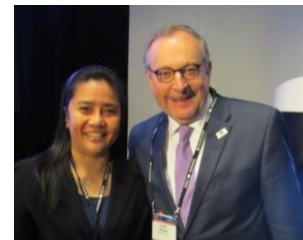
October 2015



Congratulations to CSI Research Fellow for Winning Developing Nations Award

Dr Bernadette Asuncion was awarded the Developing Nations Award for her current research in lung cancer. She received this award at the 16th World Conference on Lung Cancer held in Denver, Colorado.

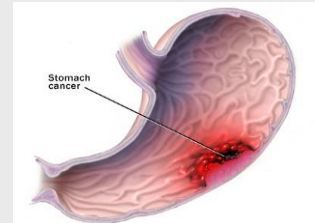
7 October 2015



RUNX3 is a Novel Negative Regulator of Oncogenic TEAD-YAP Complex in Gastric Cancer. (*Oncogene*, September 2015)

A study led by Professor Yoshiaki Ito and his team discovered a novel mechanism by which RUNX3 exerts its tumour suppressor activity involving the TEAD-YAP complex, which is a potent positive regulator of proliferative genes.

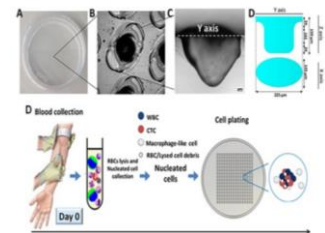
14 September 2015



Short-term Expansion of Breast Circulating Cancer Cells Predicts Response to Anti-Cancer Therapy. (*Oncotarget*, Jun 2015)

A research led by Professor Jean Paul Thiery with co-first author Dr Lee Soo Chin reported a novel and advanced method that estimates circulating tumour cells (CTCs) clonal heterogeneity and can predict patient responses to therapy in a short period.

20 June 2015



Save the Date



New Horizons in Normal and Cancer Stem Cell Research, 14 – 16 January 2016

Jointly organized by the Japan Society for the Promotion of Science (JSPS) and CSI, this symposium aims to foster exchange of scientific ideas between Singapore and Japanese Scientists. Register [here](#).