



In the SPOTLight

Cancer Science Institute
of Singapore

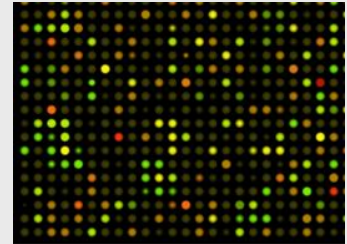
www.csi.nus.edu.sg

Issue 23 | December 2015

CSIOVDB: a Microarray Gene Expression Database of Epithelial Ovarian Cancer Subtype. (Oncotarget, Nov 2015)

Dr Ruby Huang and her team developed a novel database of human ovarian cancer, CSIOVDB, to facilitate exploration of strategies and guide targeted therapeutic approaches for this challenging disease.

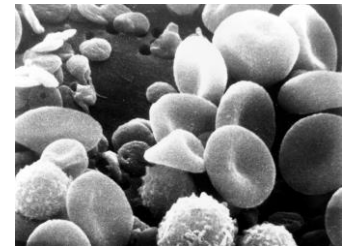
7 November 2015



CLEC-2 in megakaryocytes is critical for maintenance of hematopoietic stem cells in the bone marrow. (J Exp Med, Dec 2015)

Findings from a research study led by Prof Toshio Suda identified CLEC-2 signaling as a novel molecular mechanism mediating the production of Thrombopoietin and other factors for the maintenance of HSCs.

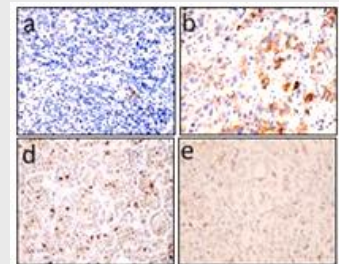
16 November 2015



Simvastatin-Induced Breast Cancer Cell Death and Deactivation of PI3K/Akt and MAPK/ERK Signalling are Reversed by Metabolic Products of the Mevalonate Pathway. (Oncotarget, Nov 2015)

By carrying out a clinical trial and functional studies, the research team led by Dr Lee Soo Chin found that the drug Simvastatin had an anti-tumoral effect in breast cancer.

11 November 2015



RNA Biology Symposium 2015

CSI held its inaugural RNA Biology Symposium 2015 on 11 November at the Centre for Life Sciences. With 11 high profile local and international speakers, the symposium was well received by 160 participants. Join us for this annual event happening next on 7-9 September 2016!

22 December 2015



Save the Date



New Horizons in Normal and Cancer Stem Cell Research, 14 – 15 January 2016

Jointly organized by the Japan Society for the Promotion of Science (JSPS) and Cancer Science Institute of Singapore (CSI), NUS, this symposium aims to foster exchange of scientific ideas between Singapore and Japanese Scientists. Register [here](#) now.