



In the SPOTLight

Cancer Science Institute
of Singapore

www.csi.nus.edu.sg

Issue 16 | May 2015

Cancer Research Month - May 2015

The month of May is designated as Cancer Research Month, in recognition of high-quality and innovative cancer research. Find out about the work being done at CSI, the importance of cancer research, and how you can support us [here](#).

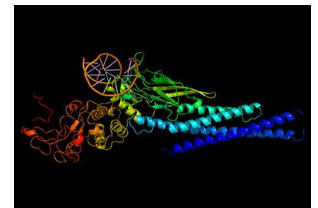
May 2015



Phase I and Biomarker Study of OPB-51602, a Novel Signal Transducer and Activator of Transcription (STAT) 3 Inhibitor, in Patients with Refractory Solid Malignancies (Ann Oncol, May 2015)

A clinical study by A/Prof. Goh Boon Cher's team has demonstrated promising antitumour activity in OPB-51602, an oral and direct STAT3 inhibitor, especially in non-small-cell lung cancer.

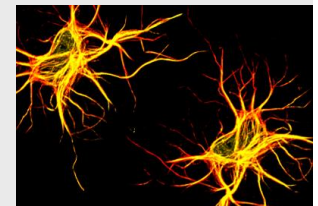
5 May 2015



Genomic and Functional Analysis of the E3 Ligase PARK2 in Glioma (Cancer Res, May 2015)

Research study by Prof. H. Phillip Koeffler's team explored the role of the protein PARK2 in Glioblastoma Multiforme (GBM). They also uncovered interactions between PARK2 and two major cell signalling pathways.

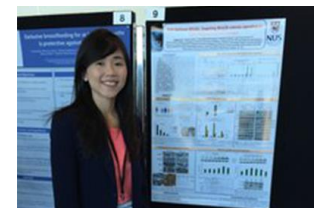
1 May 2015



Cai Wanpei Wins Best Poster Award at Science on the Swan Inaugural Conference

Congratulations to Cai Wanpei, a PhD student in Dr. Alan Prem Kumar's group, for winning the Best Poster Award at the Science on the Swan Inaugural Conference held in Perth, Australia from 21 - 23 April.

26 April 2015



Save the Date



CSI Open House, 23 July 2015

Registration is now open for our annual Open House. Please encourage Honours Year Students or aspiring Cancer Biologists to attend and explore PhD opportunities.



Frontiers in Cancer Science, 2 – 4 November 2015

Our annual conference returns for its 7th year to bring you the latest ground breaking cancer discoveries from top international experts. Registration opens June 2015.