



In the SPOTLight

Cancer Science Institute
of Singapore

www.csi.nus.edu.sg

Issue 5 | May 2014

Curious minds and the power of zebrafish

Dr Takaomi Sanda and team welcome students from Clementi Town Secondary School for an exclusive educational tour around CSI.

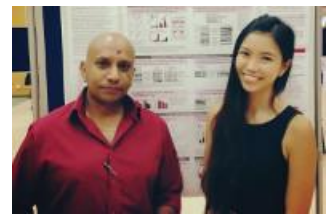
30 May 2014



CSI attachment student tops Life Sciences cohort and elected valedictorian

Supervised by Dr Alan Prem Kumar, Fiona Wong completed her Final Year Project and Undergraduate Professional Internship at the institute.

26 May 2014



Metabolic requirements for the maintenance of self-renewing stem cells (Nat Rev MCB)

Dr Toshio Suda's review raises a few questions on how key metabolic pathways control the activities of hematopoietic stem cells (HSCs).

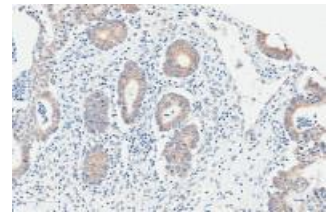
8 May 2014



LNK (SH2B3): paradoxical effects in ovarian cancer (Oncogene)

Results in study led by Prof Phillip Koeffler and Dr Ding Ling Wen suggest that adaptor protein LNK acts as a positive signal transduction modulator in ovarian cancers.

30 April 2014



Save The Date



CSI Open House – 30 July

We are opening our doors to students once again! Our 2nd CSI Open House is happening on 30 July



Singapore Ovarian Cancer Symposium – 27 June

Listen to experts discuss potential synergies in ovarian cancer on 27 June 2014.