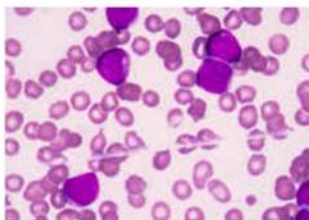


# CANCER SCIENCE INSTITUTE OF SINGAPORE IN THE SPOTLIGHT

ISSUE 43 | AUGUST 2017

## Inhibition of LIN28B Impairs Leukemia Cell Growth and Metabolism in Acute Myeloid Leukemia (AML). (*J Hematol Oncol*, July 2017)

In this study, Prof Chng Wee Joo's group has made pertinent advancement in the knowledge of the LIN28B regulatory network in malignant hematopoiesis and leukemia stem cells. They demonstrated a pivotal role of LIN28B/let-7/IGF2BP1 in connection to the progression of AML. Thus, targeting LIN28B or let-7 may be a novel therapeutic option for patients who relapse despite continued conventional chemotherapy.



## IN THIS ISSUE

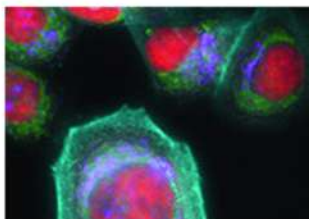
Inhibition of LIN28B Impairs Leukemia Cell Growth and Metabolism in AML

Release of HER2 Repression TFF3 Expression in HER2+/ER+ Mammary Carcinoma

"Lnc"-ing Wnt in Female Reproductive Cancers

## Release of HER2 Repression of Trefoil Factor 3 (TFF3) Expression Mediates Trastuzumab Resistance in HER2+/ER+ Mammary Carcinoma. (*Oncotarget*, June 2017)

Prof Peter Lobie and his team discovered a promising biomarker and targeted therapy in trastuzumab resistant HER2+/ER+ breast cancer. They found that TFF3 and HER2 has significant cross-regulation, enabling resistance to the chemotherapy drug trastuzumab. This new knowledge brings hope for developing therapies against drug-resistant breast cancers, which are challenging to treat.



## UPCOMING EVENTS

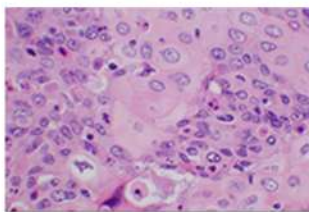
CSI Seminar  
Clare Waterman  
14 September 2017

CSI Research Meeting  
15 September 2017

RNA Club  
Prabha Sampath  
19 September 2017

## "Lnc"-ing Wnt in Female Reproductive Cancers: Therapeutic Potential of Long Non-Coding RNAs in Wnt Signaling. (*Br J Pharmacol*, July 2017)

The mechanistic functions of lncRNAs in human cancers has led to innovative reported roles of it in the Wnt pathway and Wnt-mediated oncogenesis. Dr Ruby Huang's and Dr Alan Prem Kumar's teams have provided an analytical review of the respective roles and cellular functions of Wnt-mediated lncRNAs, and emphasized it to be imperative in driving cancer development in many female reproductive cancers.



## CSI-CMU JOINT SYMPOSIUM

CSI Singapore is hosting the inaugural CSI-CMU Joint Symposium on 22 September at MD6 (LT35). This symposium, jointly organized with China Medical University (CMU) in Taiwan, offers valuable opportunities to gain new scientific knowledge and learn about the latest developments in the cancer field. Register for free today!

