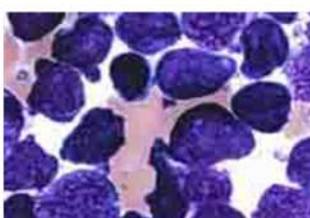


# CANCER SCIENCE INSTITUTE OF SINGAPORE IN THE SPOTLIGHT

ISSUE 42 | JULY 2017

## Mutational Profiling of Acute Lymphoblastic Leukemia (ALL) with Testicular Relapse. (*J Hematol Oncol*, Mar 2017)

Relapsed ALL is one of the prominent cause of deaths from childhood cancers. Although relapse often happens in the bone marrow, extramedullary relapse sometimes occurs in the central nervous system or testis. Through this stimulating study, Prof H. Phillip Koeffler's lab has shed light on the clonal source and progression of extramedullary relapse ALL.



## IN THIS ISSUE

Mutational Profiling of ALL with Testicular Relapse

Integrin  $\alpha\beta3$  Enhances the Suppressive Effect of IFN $\gamma$  on HSCs

AXL-Driven EMT State as a Targetable Conduit in Cancer

## Integrin $\alpha\beta3$ Enhances the Suppressive Effect of Interferon- $\gamma$ on Hematopoietic Stem Cells. (*EMBO J*, July 2017)

Prof Toshio Suda's group has imparted a novel study revealing the interdependent mechanism of IFN $\gamma$  and integrin  $\beta3$  signaling in relation to HSCs. Furthermore, there is now the possibility of further understanding the blood disease development and treatment of hematological disorders secondary to chronic inflammation.



## UPCOMING EVENTS

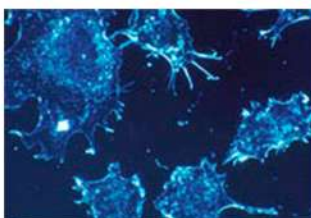
CSI Seminar  
Jiang Sizun  
1 August 2017

Singapore RNA Biology Alliance (SRBA)  
Group Meeting  
3 August 2017

CSI Research Meeting  
11 August 2017

## AXL-Driven EMT State as a Targetable Conduit in Cancer. (*Cancer Res*, June 2017)

Dr Ruby Huang and Jane Anthony have delved into the role of AXL in EMT-mediated cancer development and showcased the relationship between AXL signaling and the EMT state. They have also reviewed how the AXL molecular pathway can be targeted to develop therapeutic strategies against cancer.



## CSI SINGAPORE WELCOMES...

### Nanyang Girls' High School

CSI Singapore hosted a visit of aspiring students from Nanyang Girls' High School on 20 June, as part of their e-learning journey to connect more with the exemplary institutes and their STEM-related work. The visit consisted of an introduction to the Institute followed by a presentation on Cancer Biology and a lab tour. The girls had an educational and a rewarding trip.

