

# CANCER SCIENCE INSTITUTE OF SINGAPORE IN THE SPOTLIGHT

ISSUE 46 | NOVEMBER 2017

## The Roles of Ubiquitin Modifying Enzymes in Neoplastic Disease. (*Biochim Biophys Acta*, Sept 2017)

In this paper, Dr Pieter Eichhorn and team conducted a review of the role of ubiquitin-modifying enzymes in cancer relevant pathways. They discussed how mediated signalling of ubiquitin might enable effective therapeutic strategies.



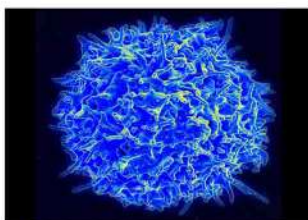
## Super-Enhancers Promote Transcriptional Dysregulation in Nasopharyngeal Carcinoma. (*Cancer Res*, Sept 2017)

Nasopharyngeal carcinoma (NPC) is an invasive cancer that has a high incidence in Southeast Asia. In this novel study, Prof H. Phillip Koeffler and his group established how super enhancers associated with oncogenic transcription could be targeted as a therapeutic option for NPC patients.



## Enhancer Profiling Identifies Critical Cancer Genes and Characterizes Cell Identity in Adult T-cell Leukemia. (*Blood*, Oct 2017)

Dr Takaomi Sanda and team conducted an enhancer profiling which found a new gene associated with super-enhancers related to adult T-cell leukemia, thus providing a novel strategy which could be used to identify critical cancer genes.



## IN THIS ISSUE

Roles of Ubiquitin Modifying Enzymes

Super-Enhancers Promote Transcriptional Dysregulation in NPC

Enhancer Profiling in Adult T-cell Leukemia

## UPCOMING EVENTS

CSI Seminar  
Haruhiko Siomi  
14 December 2017

CSI Research Meeting  
12 January 2018

CSI Research Meeting  
2 February 2018

## CONGRATULATIONS

### CSI Research Scientist Awarded the ASH Abstract Achievement Award

Congratulations to Dr Xie Zhigang, Research Scientist from Prof Chng Wee Joo's team, who has received a travel award from the American Society of Hematology (ASH) to attend and present his research at the 59th ASH Annual Meeting and Exposition! It will be held from 9 to 12 December 2017 in Atlanta, USA.

