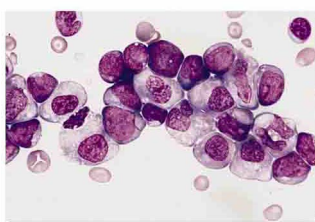


CANCER SCIENCE INSTITUTE OF SINGAPORE IN THE SPOTLIGHT

ISSUE 36 | JAN 2017

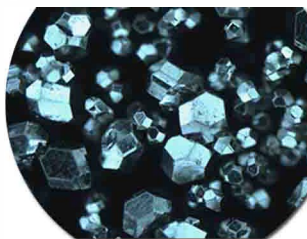
LIN28B Activation by PRL-3 Promotes Leukemogenesis and a Stem Cell-like Transcriptional Program in AML. (*Mol Cancer Res*, Dec 2016)

Prof Chng Wee Joo and team uncovered a novel molecular signaling pathway which promotes the spread of leukemia cells, suggesting PRL-3 is a future therapeutic target against AML.



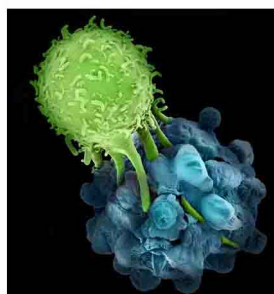
Nanodiamond-Manganese Dual Mode MRI Contrast Agents for Enhanced Liver Tumor Detection. (*Nanomedicine*, Dec 2016)

The results of this exciting study may hold interesting clinical applications, as Dr Edward Chow and team developed a nanodiamond-manganese dual mode contrast agent which can help doctors detect liver tumors more effectively.



Update on Immune Checkpoint Inhibitors in Gynecological Cancers. (*J Gynecol Oncol*, Dec 2016)

In this comprehensive review, Drs Valerie Heong and David Tan summarized recent works about immunotherapy targeting cell immune checkpoint receptors. They also focused on potential strategies to enhance the efficacy of this class of compounds, in the context of gynecological cancers.



WORKSHOPS @ CSI

CSI-ENS Bioinformatics Workshop Series

As a part of our partnership with the *Ecole Normale Supérieure de Paris* (ENS) under the Merlion Program, we are glad to announce a Workshop series in Bioinformatics during the months of February and March 2017. Several sessions will be proposed to biologists and trained bioinformaticians from CSI. These sessions will cover a wide range of topics such as RNAseq and ChIPseq dataset analysis as well as an introduction to system biology and genes network modeling. Registration details coming soon!

FACS FACILITY

The CSI FACS Facility led by A/Prof Motomi Osato was established in 2008 to cater to the flow cytometry needs of CSI and other departments located on the NUS Kent Ridge campus. With globally-accredited certified cytometrists as the key operators, the facility aims to provide users with access to state-of-the-art flow cytometry equipment, advice on flow cytometry experiment set-up, sample preparation tips, as well as rental of flow cytometry software for data analysis.

IN THIS ISSUE

LIN28B Activation by PRL-3 Promotes Leukemogenesis and a Stem Cell-like Transcriptional Program in AML

Nanodiamond-Manganese Dual Mode MRI Contrast Agents for Enhanced Liver Tumor Detection

Update on Immune Checkpoint Inhibitors in Gynecological Cancers

UPCOMING EVENTS

CSI Research Meeting
17 February 2017

CSI Research Meeting
10 March 2017

CSI Research Meeting
& State-of-the-Institute
Address
24 March 2017