



In the SPOTLight

Cancer Science Institute
of Singapore

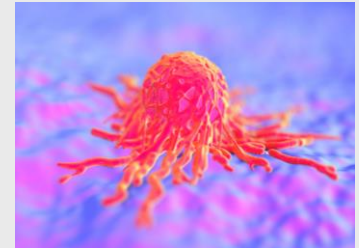
www.csi.nus.edu.sg

Issue 24 | January 2016

TIP60-miR-22 Axis as a Prognostic Marker of Breast Cancer Progression. (Oncotarget, Dec 2015)

Dr Sudhakar Jha and his team discovered a molecular pathway which can potentially predict breast cancer progression and more importantly, be a new option for therapy.

18 January 2016



Dose Modifications in Asian Cancer Patients with Hepatic Dysfunction Receiving Weekly Docetaxel: A Prospective Pharmacokinetics and Safety Study. (Cancer Sci, Dec 2015)

A group of clinician scientists at CSI Singapore led by Dr Yong Wei Peng proposed a new method to classify liver dysfunction. This new classification is more effective in guiding dose modification for a treatment regime unique to individual patients.

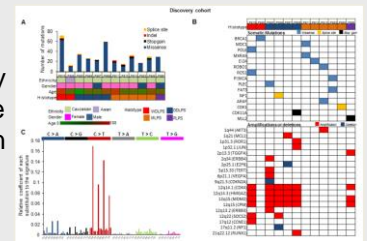
22 January 2016



Genomic Landscape of Liposarcoma. (Oncotarget, Dec 2015)

A study by Professor H. Phillip Koeffler and his team provided insights into the likely causes of liposarcoma. This study is significant as it highlights potential druggable targeted therapeutics for this disease which has no clinically effective treatment in inoperable situations.

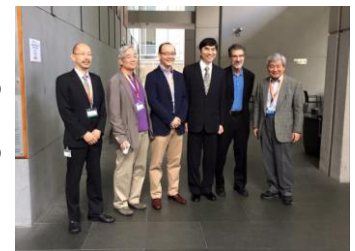
17 December 2015



JSPS – NUS Joint Symposium 2016

Jointly organized by CSI Singapore and Japan Society for the Promotion of Science, this symposium, a SJ50 Project, was held on 14-16 January. We were privileged to have His Excellency Ambassador Haruhisa Takeuchi as our Guest-of-Honour. Endorsed by the Embassy of Japan in Singapore, this SJ50 Project serves to promote mutual understanding and exchange between Singaporean and Japanese scientists.

28 January 2016



Save the Date



Frontiers in Cancer Science 2016, 7 – 9 November 2016

Our annual conference returns for its 8th year to bring you the latest ground breaking cancer discoveries from top international and local experts. Registration opens June 2016.